

MARYPING JEWELRY COLLABORATION
S/S 2015 WITH FRENCH JEWELRY
LABEL PIÉCE À CONVICTION



S/S 2015 JEWELRY COLLABORATION
WITH FRENCH JEWELRY LABEL
PIÈCE À CONVICTION

“I am firm about not having anything forced. When something is forced, you can see it immediately. It’s visceral. You can feel it. When something is natural and meant to be, you automatically sense it.”

The Spring Summer 2015 Jewelry collaboration with French jewelry label, Pièce À Conviction, really started a decade ago when Ping started collecting the rings with floating endpoints, a trademark style now widely imitated. Introduced by a close friend and hard to find anywhere else outside of Paris, Ping and the designer Ghislain Ryckebusch eventually met and shared a similar and intrinsic understanding of sculptural lines and forms. The conversations led to a debut collaboration collection and a perfect

prelude to the relaunch of Ping’s signature line. The ten piece collection is individually handmade in France and includes brass and silver, with spheres hand rolled from Murano glass, and semi-precious stones. Available in 18k gold upon special request.

Mary Ping, 36, was born in New York and received her BA degree in Art from Vassar College. Upon completing her studies at Vassar, Ping spent one year studying womens wear at London College of Fashion. In 2002, she launched her eponymous line of designer ready-to-wear and a year later started Slow and Steady Wins the Race, a label known for its sartorial wit, comprised of collections based on categories, concepts, and classics and rooted in modern cultural anthropology. Styles are distilled. Materials are re-assessed. And ideas about the wardrobe are re-interpreted. Ping’s work has been widely exhibited. Currently, her work can be seen at the Venice Biennale for Architecture at the American Pavilion, Deste Foundation for Fashion, Herning Museum of Contemporary Art in Copenhagen, and the Museum Boijmans Van Beuningen in Rotterdam.

S/S 2015

MOORE

Description:Brass bracelet with 4
textured spheres
Color/Material: Metal



S/S 2015

MOAB

Description: Bracelet with 2 Murano
glass spheres
Color/Material: Metal and
Handblown Glass



S/S 2015

MORRIS

Description: Hematite sphere
twist ring
Color/Material: Metal and Hematite





S/S 2015

MIN

Description: Necklace with three
locking spheres
Color/Material: Metal and
Handblown Glass



12

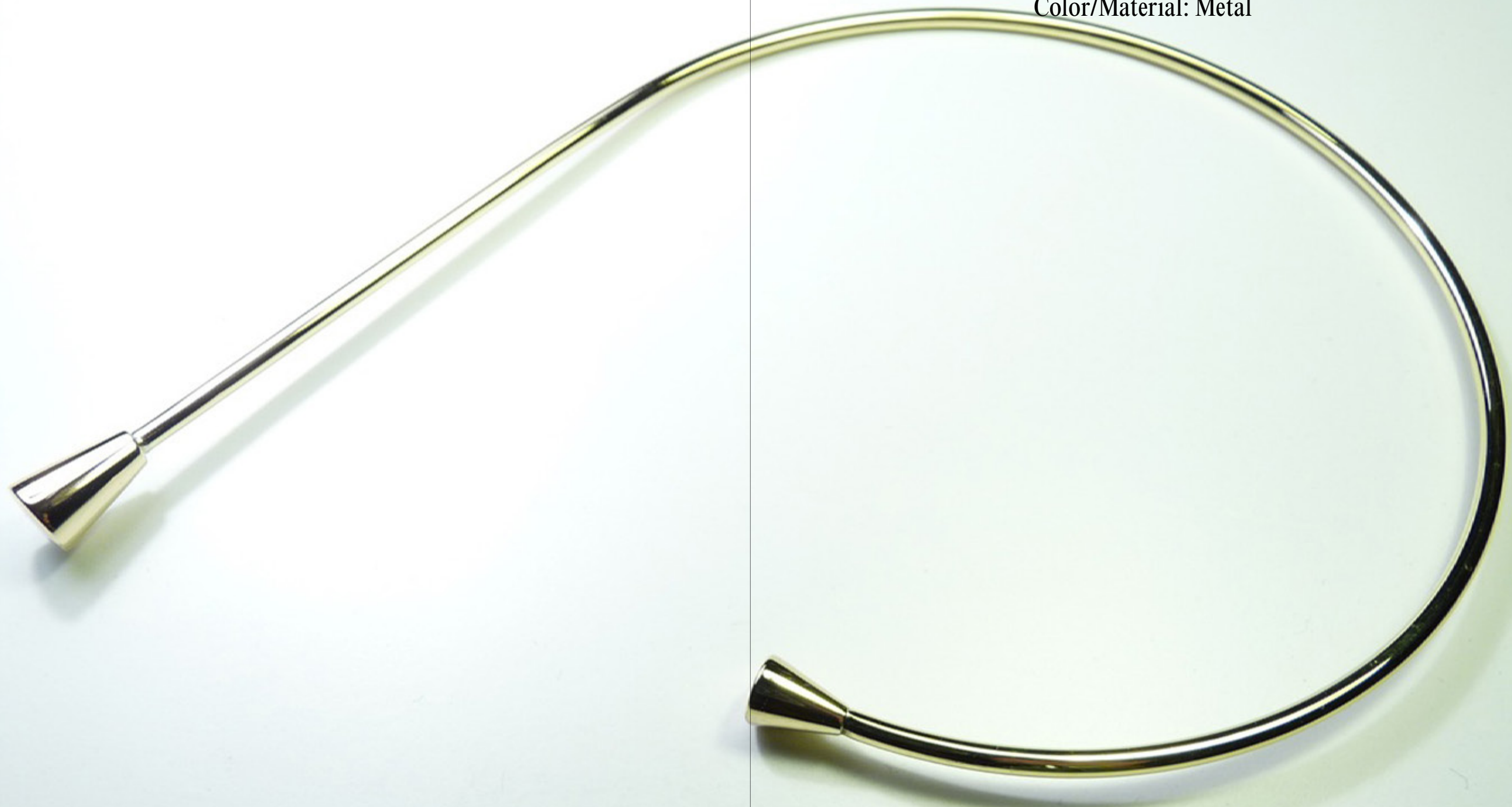
13



S/S 2015

MONO

Description: Open necklace with
flat cone ending
Color/Material: Metal



16

17

S/S 2015

OVERTURE

Description: Bracelet with double
circle spheres
Color/Material: Metal



18

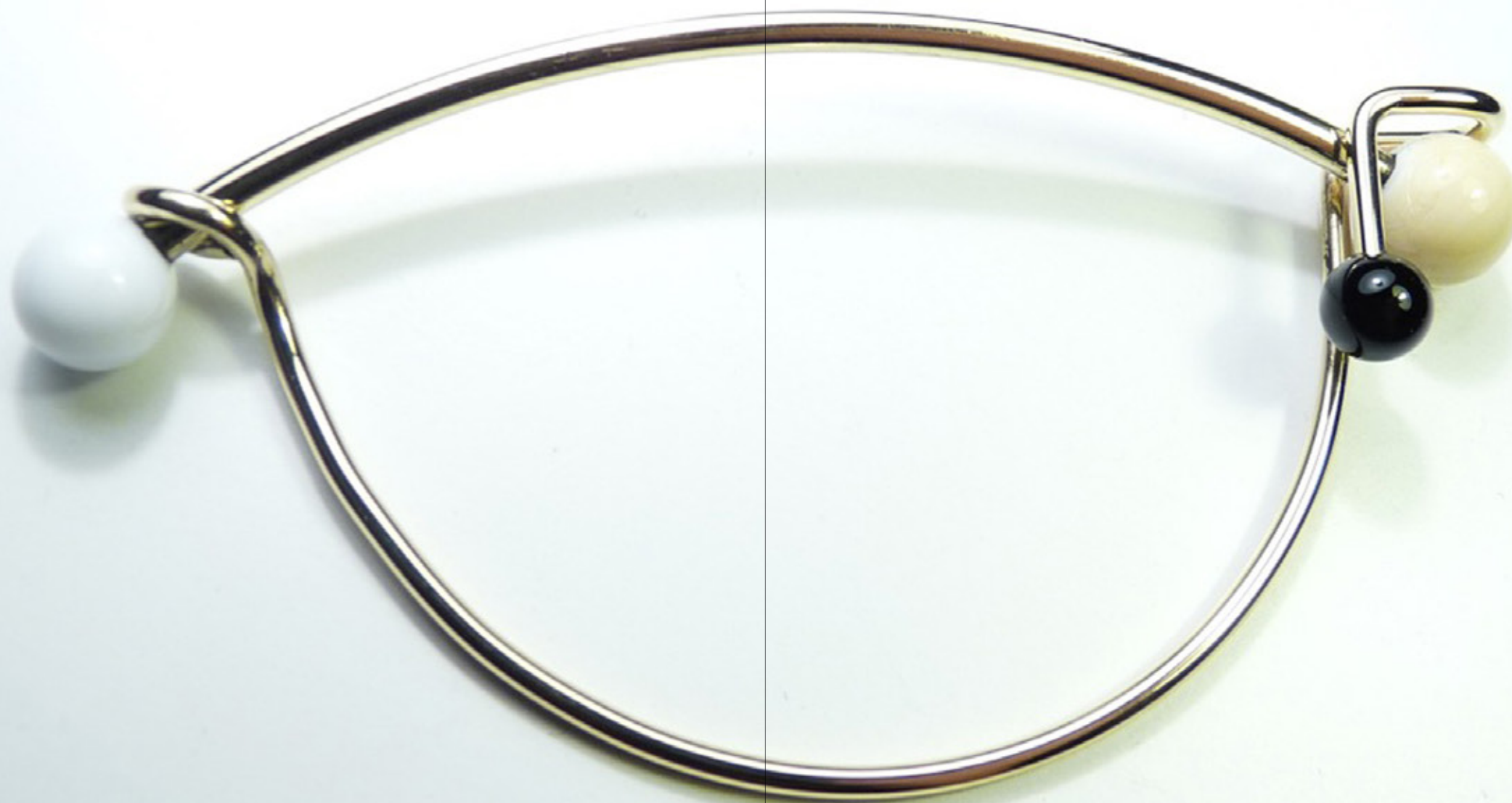
19



S/S 2015

OPUS

Description: Bracelet with 3
handblown glass balls
Color/Material: Metal and
handblown glass



Photography: Pièce à Conviction
Graphic design: Studio Lin

T (212) 675 1818
F (212) 675 1810
info@maryping.com

MARYPING